



Idea Exchange



GEAPS
EXCHANGE

KANSAS CITY • 2023

Idea Exchange Sponsors



**CUSTOM
CONCRETE
SPECIALISTS**

ASSESS. PROTECT. REPAIR.



STAY CONNECTED!

Download the mobile app!

- Schedule and event details
- Exhibitors and floorplan

Search for “**GEAPS Exchange**” in the App store or via QR Code.

Share Your Experience On Social Media.
#GEAPSExchange



Download App



Idea Exchange

What's New

FloodDefender

By Portadam

Billy Tiller



Billy Tiller

Portadam

Director of Business Development





Deployable
Flood Protection,
Temporary
Cofferdam &
Water Storage
Solutions

Decades of
Water Control
Expertise



PORTADAM[®]

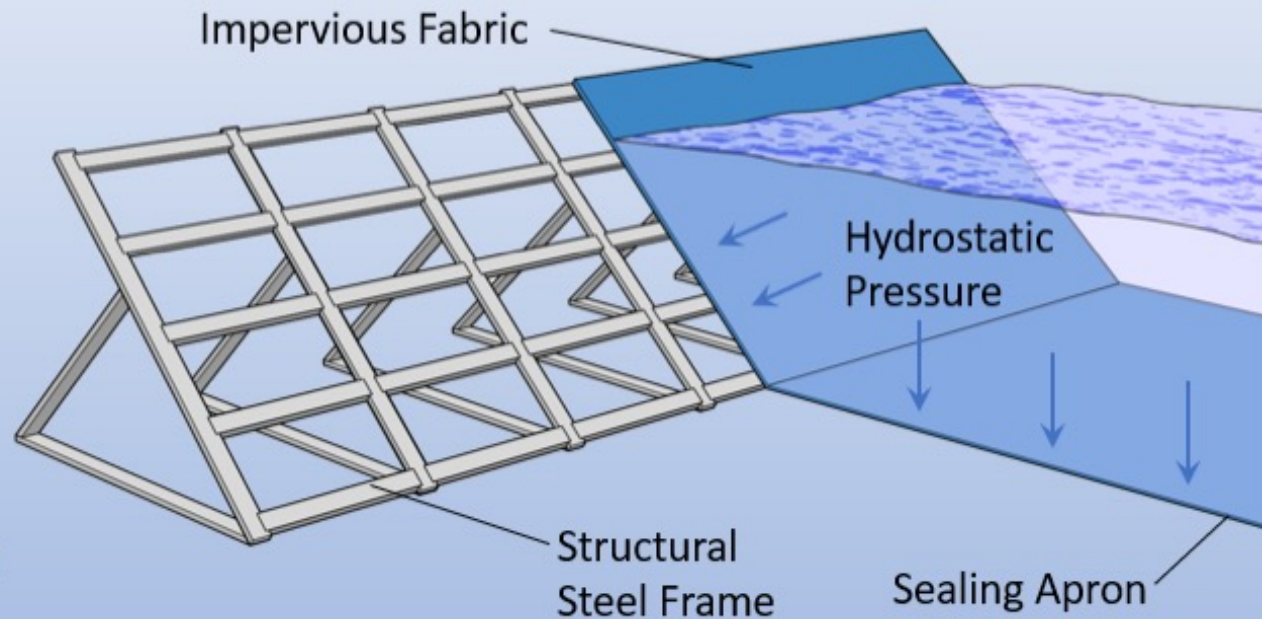
Flood Risk Mitigation Solutions[™]

WHEN TIME IS OF THE ESSENCE



Portadam's Rapid Deploy Solution

- **Fully Engineered**
 - Resistance to Overturning
 - Resistance to Sliding
 - Frame Stress Analysis
 - Fabric Stress Analysis
- **Redistributes Load vertically and downward to secure structure**
- **Hydrostatic loading creates seal to surrounding ground**

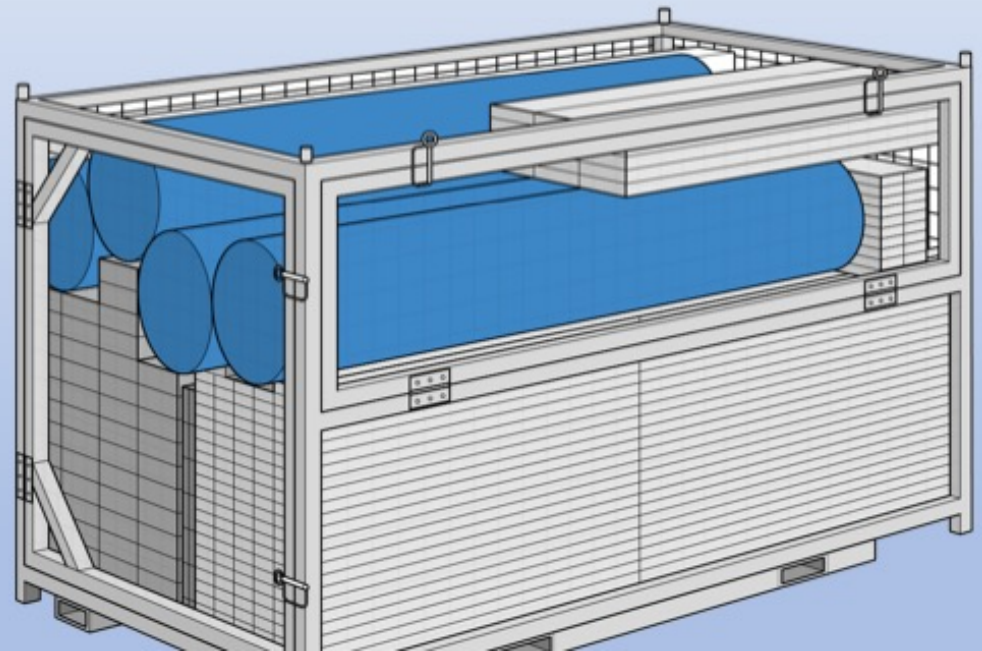


200X QUICKER THAN SANDBAGS



Compact Engineered Design

- **Modular** – Can be deployed in virtually any configuration
- **Allows for storage near to high flood risk areas**
- **Ease of storage, transport and deployment of complete kits**
- **Example: 150 linear feet of 48” protection stored in a single 6’ x ~4 x ~4’ portable, stackable racks**



Thank you!
Visit us at our booth # 1544

Testing for Enogen® becomes New Norm at Major Corn Processors

Industry point of view from only Onsite Enogen Detection Test Kit provider

Enogen is a registered trademark of Syngenta Participations AG



Akshay Vidwans

EnviroLogix

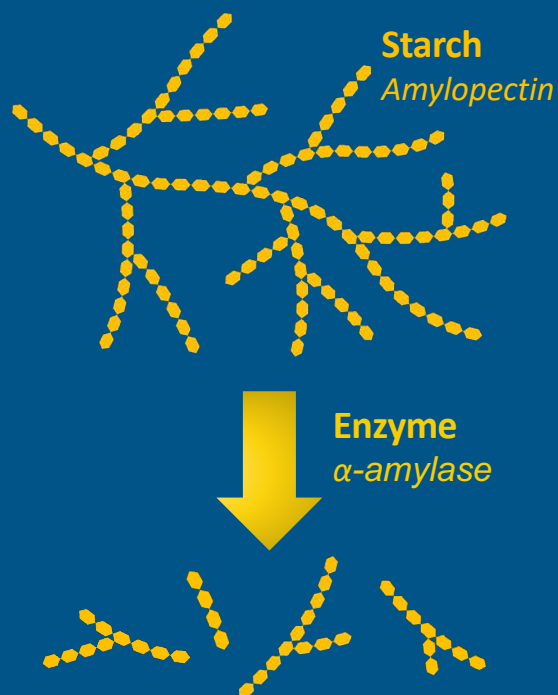
Product Manager



Testing for Enogen becomes New Norm at Major Corn Processors

Industry point of view from only Onsite Enogen Detection Test Kit provider

Alpha amylase breaks down **starch** into smaller chains, impacting starch functionality



Enogen Corn

Adoption achieving a tipping point 11 years in the making



Enogen Corn | Introduced for Ethanol production

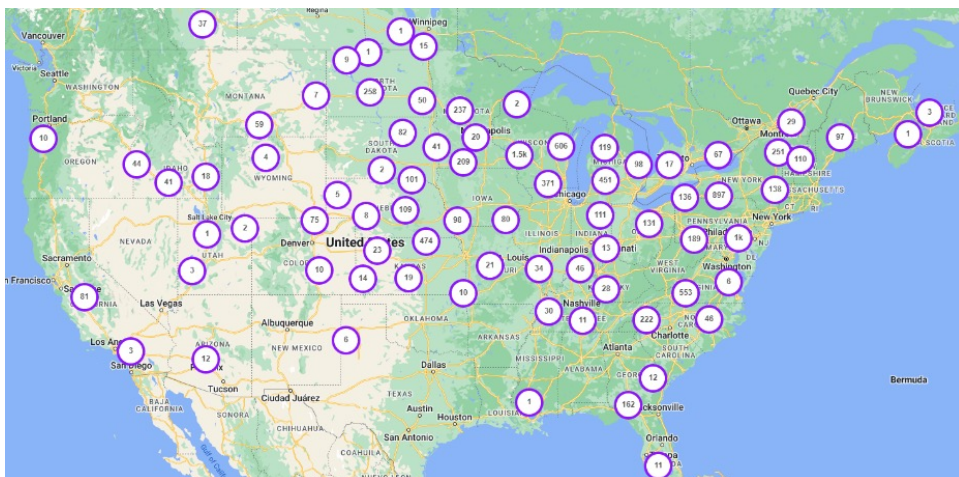
- Enogen corn is a GMO corn that produces an endogenous α -amylase in endosperm that is activated in the presence of water and elevated temperature ($>70^{\circ}\text{C}$) (Lanahan et al 2003)
- Enzyme acts as catalyst for breaking down starch into sugar-helpful in ethanol manufacturing and feed digestion. Not helpful in baking dough
- Licensed growers to produce Enogen grain to support a growing number of ethanol plants, representing approximately **3 billion gallons of ethanol capacity** - *Syngenta Website*

Feed Application | A Major Success Since Introduction

- Syngenta introduced a feed application for Enogen corn in 2018, claiming higher feed efficiency in dairy and beef production.
- The demand for Enogen corn for feed has rocketed over last three years and drove **double-digit growth in sales of the seed in 2021** - *Syngenta 2021 financial Report*

Contamination Risk is Real! | Feed Application growth has changed risk profile

2022 Crop Year Enogen Farms connected on IP360 platform



- With Enogen corn spreading to all corn producing areas in the US, there is a high overlap of Enogen corn growth areas and Milling capacity
- Risk of cross-pollination due to wind and weather
- Risk of cross-contact through shared equipment, storage, transport
- Recent enquiries and test sales to Central and South American customers importing food grade corn from US

“We cut about 400 to 500 feet off the end of 400 acres that we had to bin separately—and it was contaminated. We tested it and it wasn’t going to meet specs.”

-Mark Jost of Henderson, Nebraska

We see several **positive results of PCR tests** conducted at our lab **for customer samples** sent for routine testing or issue root cause analysis

Impact on Dry and Wet Milling | Scientific Study by Dr. Vijay Singh, University of Illinois Urbana-Champaign

High Impact on Residual Enzyme

Residual Amylase Content (U/g)	Control	0.1% Amylase corn	1% Amylase corn	10% Amylase corn
Large Grits	0.04	0.04	0.08	2.13
Small Grits	0.01	0.02	0.09	2.88
Fines	0.03	0.01	0.07	2.44
Germ	0.09	0.14	0.63	1.87
Pericarp	0	0.01	0.2	1.51
Mean U/g	0.17	0.22	1.07	10.83

Limited Impact on Fraction Yield- Dry Milling



“The issue is a significant one for the milling industry, **not because it has an impact on the milling process but on the product millers ship to their customers**”

- R. Don Sullins, a member of the NAMA technical committee

- Reported that there is no impact of amylase corn addition in the dry/wet milling *yields* for dent corn but reported **growth in residual enzyme content**
- Enzyme activity values correlate with concentration of total Amylase corn with **1% Amylase corn correlating to 1U/g residual enzyme***
- The study concludes by recommending that **quality measurements are warranted** on final end-products of these fractions to determine the impact of these residual enzyme concentrations

*By our model that was reviewed by an enzyme industry expert, 1 U/g is enough Amylase content to catalyze conversion of 100% 300 chain length corn starch in 20 min at test specified conditions of 55C, pH 10.

Enzyme optima is >70C. Real world performance may be accelerated or inhibited based on temperature, pH etc. The actual acceptability of the degraded product will also depend on amount of dextrin-glucose created and required to make the starch dysfunctional



Real World Product Quality Issues

What I have heard over the last year

Product Quality Impact- Voice of Industry

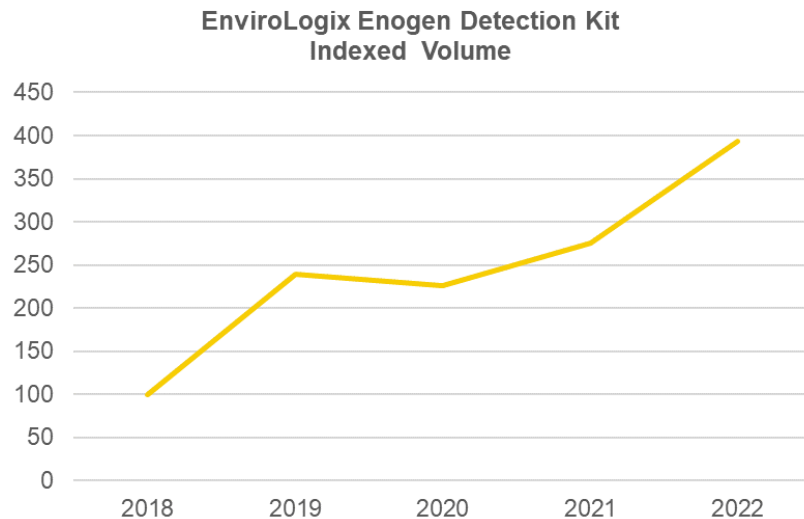
- **Masa flour batch quality incidents** leading to tortilla product quality impact
- Enzymes can remain active well after the cooking process is over and **continue to impact the starch quality of the packaged foods**, making tortilla dough sticky or the product fragile
- **Cornbread** made using this enzyme containing corn flour **crumbles on its own** when stored in a hot box/ hot shelf
- **Soupy and runny corn grits**
- **Tamales don't bind**

Business Impact

- Customer complaints
- Loss of production
- Loss of customers
- "Enogen Free" claims and assertions to end-product customers in the know

To mitigate impact from even low levels of contamination, industry requested for more sensitive test capable of detecting <0.1% Enogen Corn, compared to earlier available test LoD at 0.25%

4x Growth in testing since introduction of Feed application of Enogen corn



Large processors clearly see Enogen cross-contact as a major risk, evidenced by the growth of testing at, both, wet and dry milling facilities

Recommendations

- ✓ **Senior Quality Managers** most effective in protecting product quality and customer relationships.
- ✓ **Include Enogen corn detection test during root cause analysis** of customer complaints that could be related to starch degradation
- ✓ **Measure your sourcing risk through supplier mapping and testing**
- ✓ **Understand end-customer impact for processes** where corn is cooked/kept at $>50^{\circ}\text{C}$ for >10 min or soaked in acidic/alkaline environments e.g. baking, nixtamalization, boiling, etc.
- ✓ **Be proactive** to manage risk to product quality and brand reputation

Thank you!

To continue the conversation, visit us at our booth #926



Solar Strategies for Grain and Feed Operations

Presented by Jim Shaw



Jim Shaw

Solentia Energy

President



FEATURED PROJECT

THE MASCHHOFFS

America's First Solar Powered Feed Mill



3 MW Solar Array

Griggsville, IL



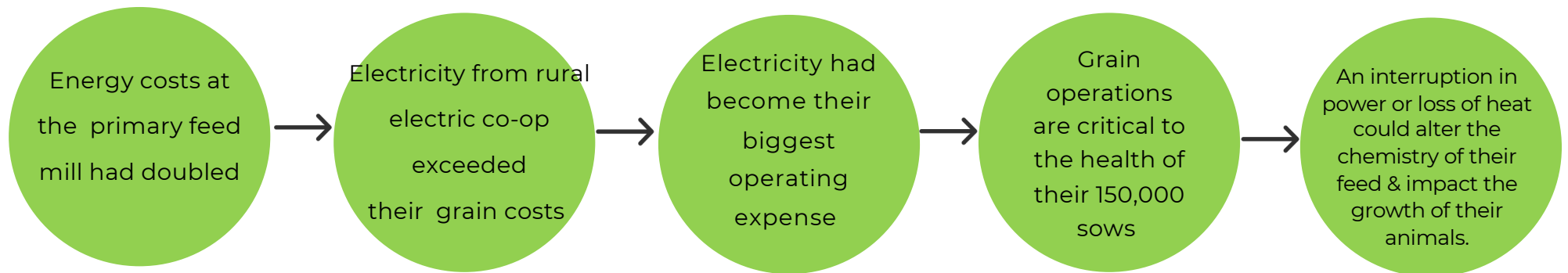
Rising energy costs were not something we could absorb and remain profitable - and that was before 2022 when energy costs really took off. We needed to do something"

-Gerry Daignault
The Maschhoffs



THE CHALLENGE

THE MASCHHOFFS FACED SEVERAL CHALLENGES...



PROJECT CONSIDERATIONS

CURRENT ENERGY CHARGES

The mill was served by an electric cooperative whose energy charges were 50% higher than market averages

ENERGY USE & UTILITY TARIFFS

Solential began modeling energy solutions that included microgrids, solar PV and energy storage.

FEDERAL & STATE INCENTIVES

The state of Illinois offers financial incentives to businesses for generating renewable energy.

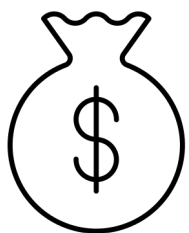
SOLAR RENEWABLE ENERGY CREDITS (SRECS)

For each unit of energy a solar array produces, that unit is converted into a credit for the solar array owner to sell back to the state through the Illinois Shines Program.

CHOOSING THE BEST ENERGY SOLUTION

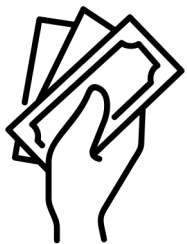
The family-owned company approved a plan to deploy a solar-only solution for the Griggsville mill.

THE IMPACT



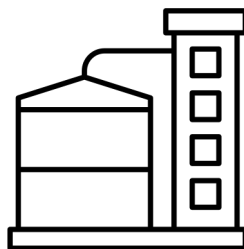
\$320,000

FIRST-YEAR ENERGY
SAVINGS



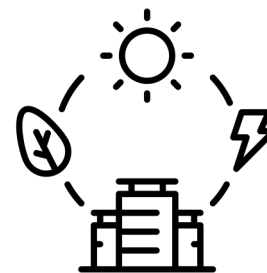
\$700,000

ANNUAL ENERGY
SAVINGS



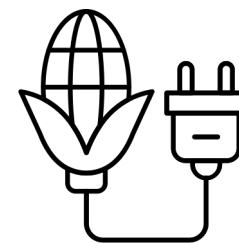
5 YEARS

TIME IT TAKES PROJECT
TO PAY FOR ITSELF



35 YEARS

AMOUNT OF ENERGY GENERATION
CAPACITY TO POWER THE MILL



50%

ENERGY
CONSUMPTION
OFFSET BY SOLAR



STAY CONNECTED!



SOLENTIAL ENERGY
13277 ILLINOIS ST.
SUITE 110
CARMEL, IN 46032



317 - 441 - 1849

Visit us at Booth # 402!

Utility Monitor

Understanding Your Power Consumption
for Better Cost Management



Dan Riley

Interstates

Analytics Manager

INTERSTATES



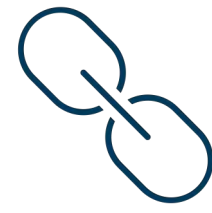
Identify

Better understand your
energy consumption
on high-demand
equipment



Impact

Set short and long-
term strategies that
lead to additional
savings and improved
operations



Connect

Bring any network
metering system
together giving you a
central location to view
and analyze data



What Does This Look Like?

- Gain real-time analytics and monitoring
- Increase accessibility and connectivity
- Build a scalable solution

Power: Data At All Levels

Service & Distribution

- Plant-Side Metering
- Live Utility Bill
- Power Quality
- Capacity Trending and Indexing
- Power Factor
- Harmonics

MCC & Sub-System

- Per Motor & Drive Data
- Load Monitoring
- Unit Efficiency
 - Compressed Air
 - Boiler



Billing Savings

Audit your utility bill to challenge unplanned power expenses



Project Savings

Know your load capacity for future capital projects



Maintenance

Find what drives and motors are affecting your maintenance budgets

THANK YOU!

For more information, visit Interstates at booth 2102.

INTERSTATES

Electric Motor Maintenance

Common failures and predictive maintenance tips



Matthew Rodebush

ABB Motors and Mechanical Inc.

Global Segment Manager – Food &
Beverage, NEMA motors

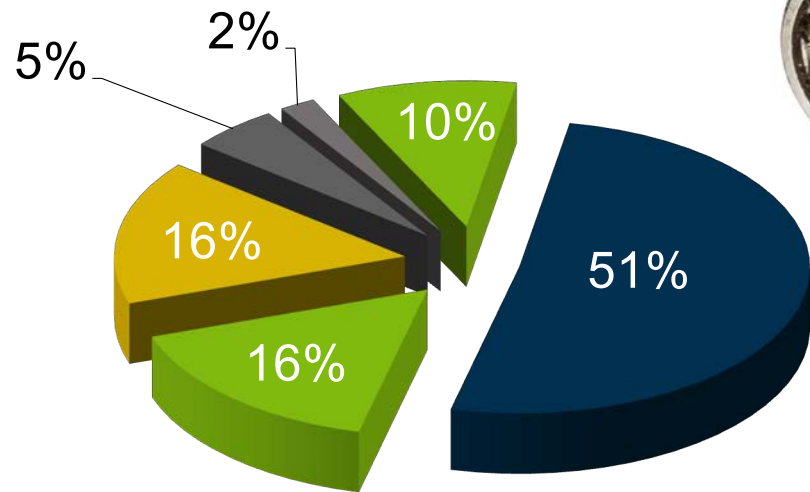


Electric Motor Maintenance

Common failures and predictive maintenance tips

Did you know?

Most common failures in electric motors:

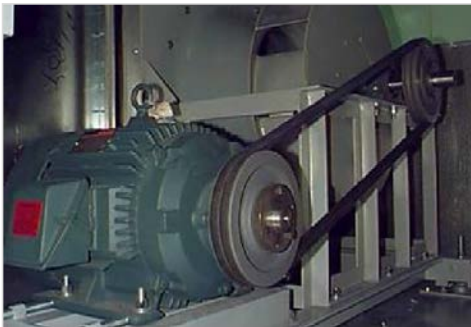


- Bearings
- Windings
- External Factors
- Rotor Bar
- Shaft/Coupling
- Unknown

Predictive maintenance tips

Visual inspection

- Misalignment, securely mounted
- Damaged parts, missing components
- Cooling effectiveness, (Ambient)
- Shaft, gaskets, contaminants
- Cabling/grounds have good contact



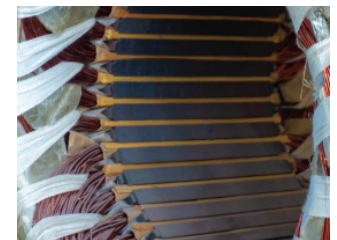
Mechanical - bearings



- Regular greasing schedules
- Check for excessive axial movement
- Smooth, easy rotation of the motor shaft
- Inspect for noise during normal operation
- Use of bearing RTD's to record temperature

Electrical - winding

- Check incoming power voltage
- Overloaded phases (imbalance) causes overheating using multimeter or variable speed drive data
- Amperage draw of the motor to ensure you are not overloading or under sizing the motor
- Clean and dry windings and insulation are critical for long motor life



Remoting monitoring with ABB Ability Smart Sensor

Affordable, clever and easy solution

- Improves safety
- Reduces downtime
- Saves energy
- Reduces your maintenance cost
- Optimizes your investment
- Mitigates your risks

ABB Ability Smart Sensors



Baldor-Reliance motors smart sensor promotion

Upgrade new motors to Smart Motors for \$175, and select motors are eligible for a no cost upgrade to Smart Motors. Ask your local sales representative for more information.



To learn more about
ABB Ability

ABB Motors and Mechanical Inc.

Booth 2126

Come see us!



ABB

QR Technology

BCI



Brett Buchanan

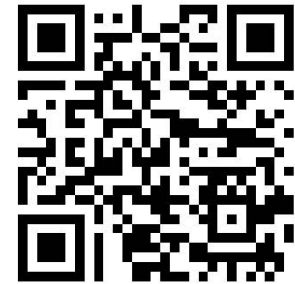
Bulk Conveyors Inc

CFO



BCI's Intelligent QR Technology

A platform with infinite possibilities at your employees' fingertips.



SCAN FOR SPARE PARTS AND SERVICE

MAIN PAGE



GEAPS – Kansas City, MO Grain Facility



Customer Conveyor ID: RECLAIM DRAG DC-02

Conveyor Serial Number: HD-417

Conveyor Drawing: DC-02 Conveyor ([CLICK ME](#))

Conveyor Spare Parts: Spare Parts ([CLICK ME](#))

Conveyor Safety/Maintenance Guidance:

Chain Maintenance ([CLICK ME](#))

Conveyor Maintenance Check List ([CLICK ME](#))

Sprocket Maintenance ([CLICK ME](#))

To Order Spare Parts or for
Customer Service

Call: (316) 201-3158

Email: info@bciks.com

Intelligent QR Technology Main Page

- Equipment Description
- Equipment Drawing
- Spare Parts for the Equipment
- Safety Guidance
- Maintenance Recommendations
- One-Touch Link to BCI Customer Service



BCI MONTHLY CHAIN CONVEYOR INSPECTION

NAME OF INSPECTOR _____

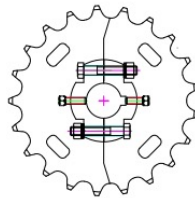
DATE _____ CONVEYOR I.D. NO. _____



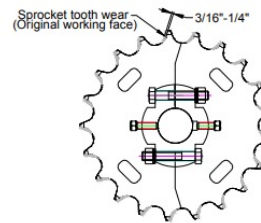
DO NOT walk on chain conveyor covers, **DO NOT** perform any work on conveyor until all power has been locked out (with lock and key in your possession).



Sprocket Wear



New Sprocket



Sprocket
(Original working face worn)



- (c) Use a temperature gun to ensure the motor is operating at the appropriate temperature. -- --
- (d) Is the reducer oil level correct? -- --
- (e) Is the reducer breather cap clean? -- --
- (f) Are the coupling guard and drive guard in good operating condition? -- --
- (g) Are the motor bolts tight and is the motor in line with the reducer shaft? -- --
- (h) Is the motor running quietly? -- --
- (i) Are the v-belts and sheaves in good condition? -- --
- (k) Are the roller chain and sprockets in good condition? -- --

Safety/Maintenance Guidance



- Rated Capacity
- Equipment Model/Size
- Key Part Sizes
(sprockets, shaft, motor, reducer)
- Chain Speed

[illegible]

Rapid Testing Solutions for the Future of Grain & Feed

VICAM



Carlton Skipper

VICAM

Regional Sales Manager

Waters™ | **VICAM™**

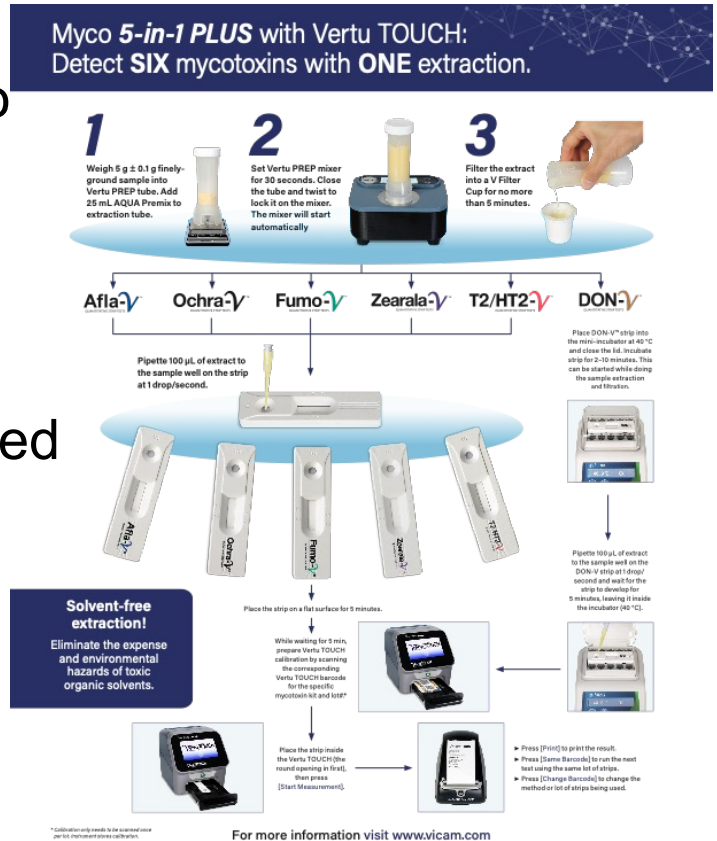
Why Testing for Mycotoxins Has Become Essential



- Secondary metabolites of naturally occurring, soil-borne molds
- Toxic at very low concentrations
- Global regulatory limits & guidelines for animal feeds are common
- Early detection supports prevention

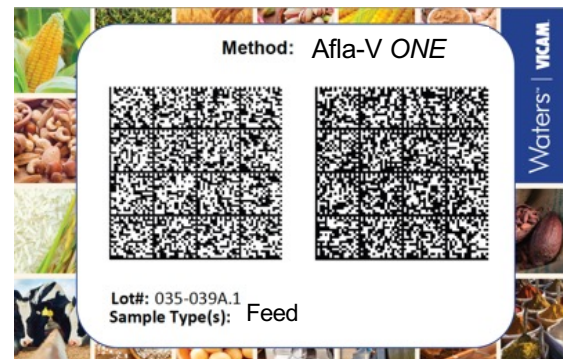
Optimizing For Multi-Mycotoxin Testing

- One Extraction Enables up to 6 Different Toxins to be Tested
- Ideal for incoming raw materials
- Select only the toxins you are targeting
- 30-Second Extraction, Filter, Apply 100 uL of filtered extract to each strip
- Results for **up to 6** toxins in less than 10 minutes



Finished Feed: One Method Covers All

- Single, universal barcode calibrates strip test reader
- Replaces traditional, toxin-based calibration approaches
- On-board calibration storage, recall and reuse
- Automated calibration management, deletion when strip test lot is beyond expiration date



Afla-V ONE Procedure Overview



- Weigh 5g ground sample
- Add 30 mL mL 80:20 Methanol:Water



- Extract: 90s



- Filter



- Dilute Sample:

Range 1: 2-80 ppb

- Mix 200 μ L ONE Diluent w/ 100 μ L filtered sample extract

Range 2: 5-300 ppb

- Mix 200 μ L 80:20 Methanol:Water w/ 100 μ L filtered sample extract
- Transfer 100 μ L to vial containing 200 μ L ONE Diluent



5 Minutes



- Transfer 100 μ L to Afla-V HS Strip
- Develop 5 Minutes
- Read result

Performance Data: 20ppb Aflatoxin Spiked Samples



Afla-V ONE
QUANTITATIVE STRIP TESTS

Total aflatoxins (B₁, B₂, G₁ and G₂) determination using Afla-V ONE for finished feeds – spike level: 20 ppb

Feed	Mean	STD	CV%	Recovery (%)
Hog finisher	20.1	1.4	7.0	100.3
Pig starter	19.8	0.3	1.6	97.9
Laying chickens	20.1	0.6	3.2	100.3
Bird/turkey	19.6	0.1	0.6	95.3
Dog food 1	19.4	3.8	19.8	87.6
Dog food 2	19.7	1.4	6.9	97.1
Horses	17.9	0.2	1.3	89.5
Equine senior	19.9	0.9	4.7	96.8
Equine/beef	22.2	0.1	0.2	108.4
Beef calves	18.7	1.6	8.6	88.5
Cattle	20.6	0.1	0.7	101.1
Goat grower	18.6	0.5	2.9	85.0
Goat snax	18.8	0.7	3.5	89.3
Cat food	19.3	0.9	4.6	93.4
Rabbit	18.1	0.5	2.9	89.3
Fish	22.4	1.4	6.4	104.9

DON-V ONE: Universal Calibration for Vomitoxin Detection

- Barcode Based Calibration
- Dual Range Options
 - 0.2 – 10 ppm
 - 0.8 – 40 ppm
- Total Test Time: < 8 Minutes
- One Method For “All” Complete Feeds
- Introduced Afla-V ONE in 2022



DON-V ONE
QUANTITATIVE STRIP TESTS

Glyphosate-V - The World's First Fully Quantitative Lateral Flow Strip Test For Glyphosate in Cereal Grains and Water

- Full range, quantitative Glyphosate testing
- Rapid, on-site results (<15 Minutes)
- Cereal Grain Samples
 - Range: 0-2ppm
- Water Samples
 - Range: 0-0.5ppm



Questions? Visit Us at Booth #2515

Waters™ | **VICAM**





Encoder-Flex 1024

Multi-purpose position
& speed monitor!



Anthony Leali

4B COMPONENTS LIMITED

Business Development Manager,
Electronic Products





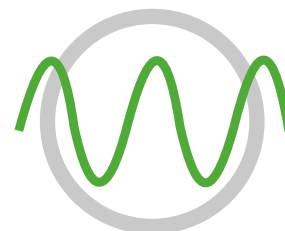
Encoder-Flex 1024

Multi-purpose position
& speed monitor!

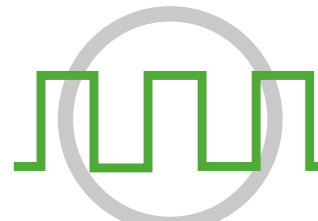


Encoder-Flex 1024

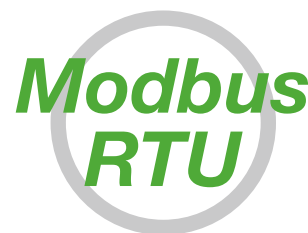
- Position or Shaft Speed Monitoring
- 3 Outputs: 4-20 mA, Quadrature Pulsed, and Modbus RTU
- Configurable for 1-1024 PPR
- CSA/UL Class II Approval (Pending)



Analog



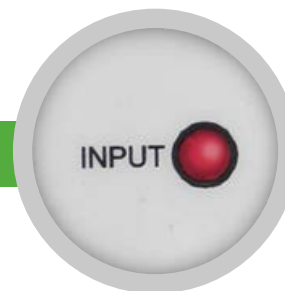
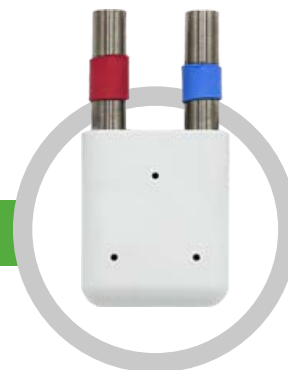
Pulsed





Encoder-Flex 1024

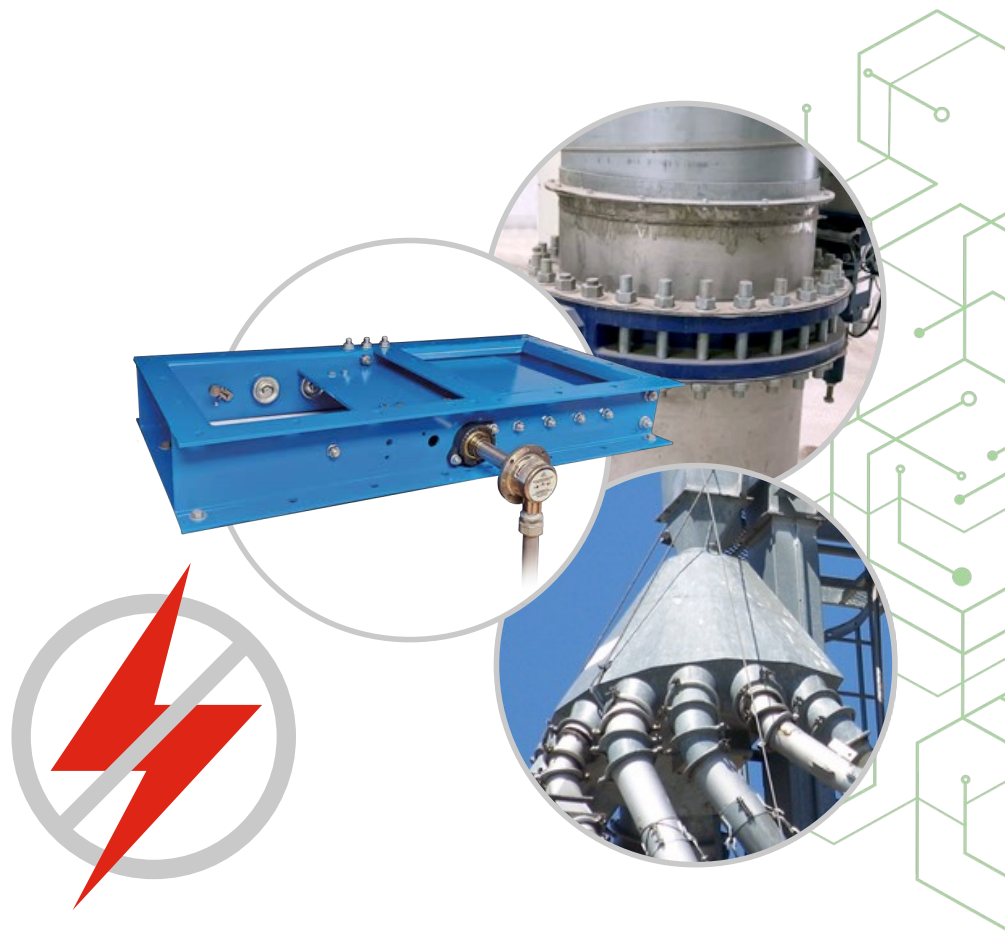
- Lightweight Compact Design – Magnet Mountable
- Sealed Stainless Steel Construction
- Simple External Magnetic Calibration
- LED Status Indicators





Encoder-Flex 1024

- Slide Gates
- Valves
- Distributors
- Virtually unlimited multi-turn calibration
- Position retention AFTER power loss





Encoder-Flex 1024

- Dryers
- Bin Sweeps
- Mixers
- Slow Moving Conveyors





Encoder-Flex 1024

- Real-time Display
- Calibration Assistant
- Configure Resolution
- Diagnostics



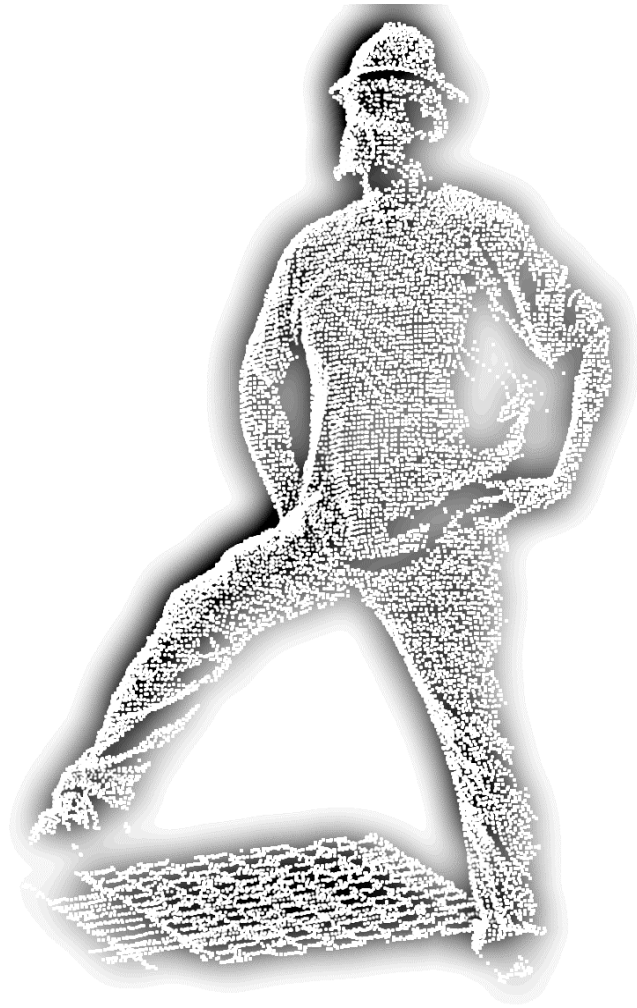


See it live in
BOOTH #918



3D Scanning Applications in the Ag/Industrial Sector

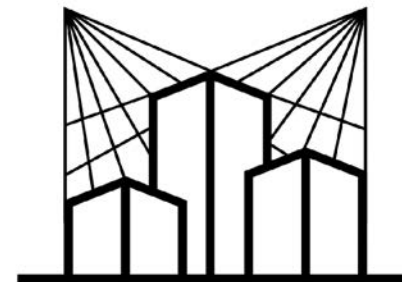




Daniel Starr

SCANSTAR, LLC

COFOUNDER



SCANSTAR

DATA DRIVEN • GEOSPATIAL • SOLUTIONS

11040 183rd CIRCLE NW, STE AA

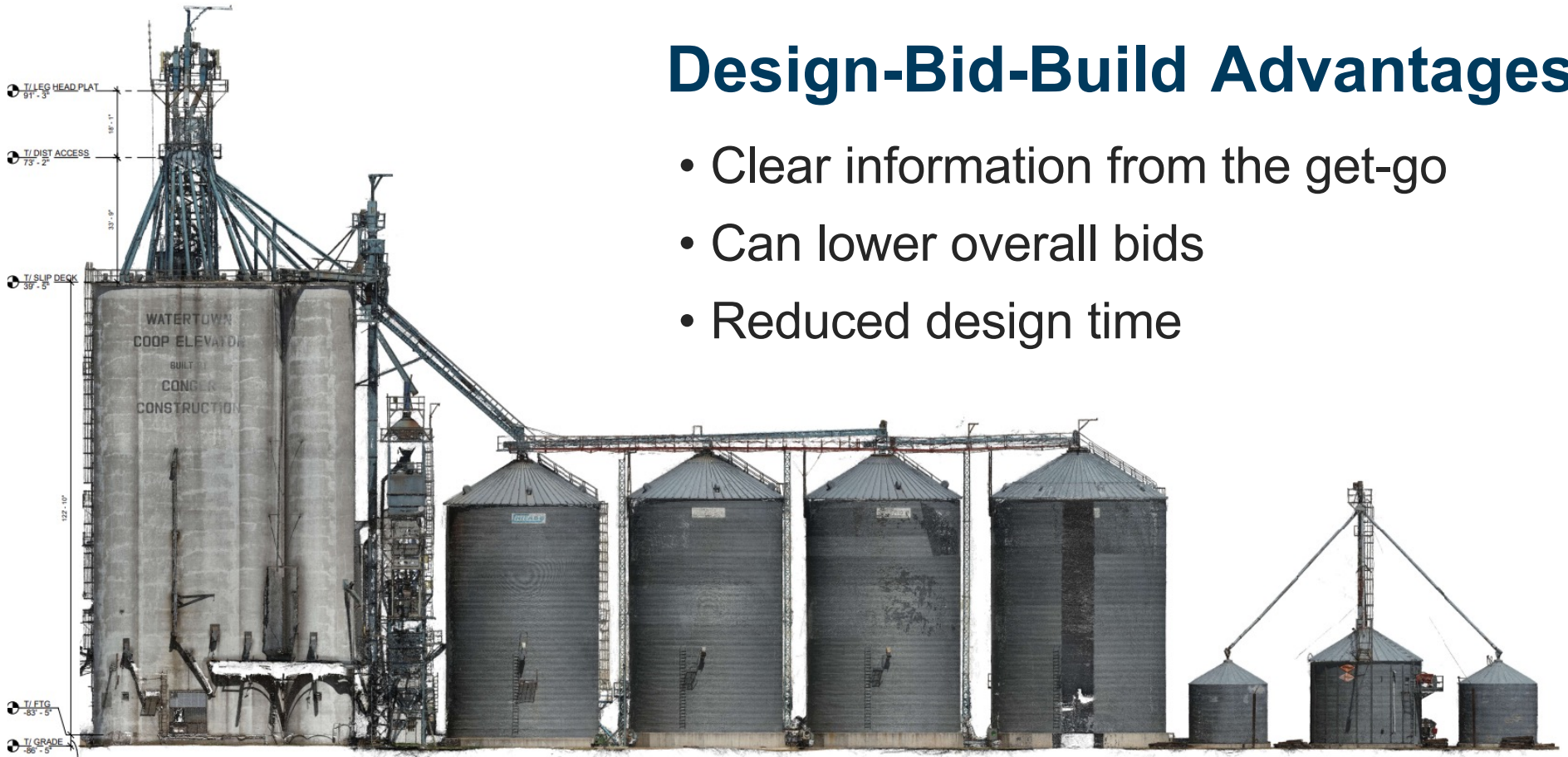
ELK RIVER, MN 55320

3D Scanning Applications in the Ag/Industrial Sector



Design-Bid-Build Advantages

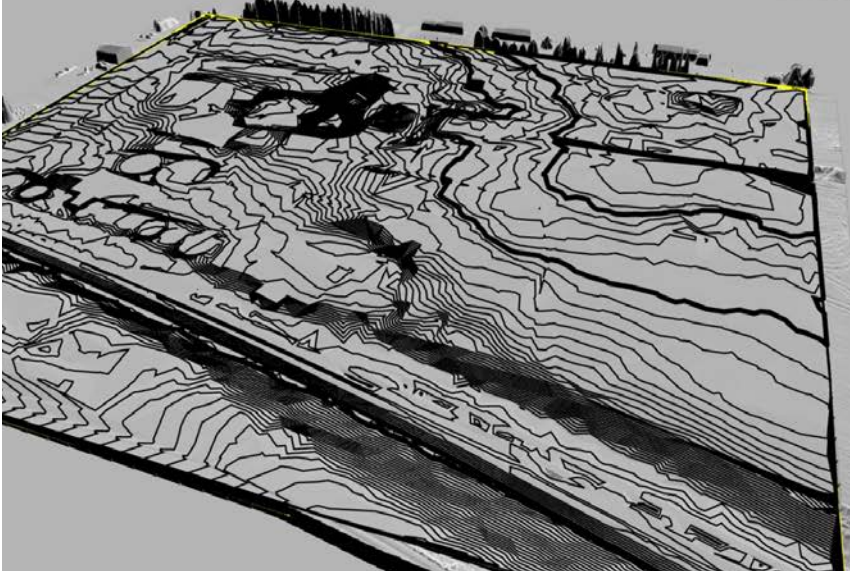
- Clear information from the get-go
- Can lower overall bids
- Reduced design time



Owner Advantages

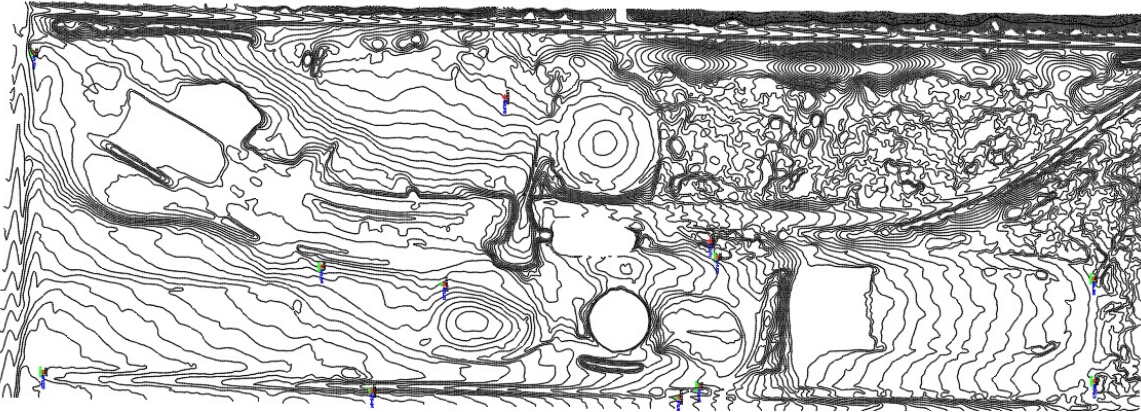
- Facility Data readily available for:
 - planning & design
 - records & documentation
 - Insurance & asset tracking
- Reduced need to expose facility workers to elements and hazards
- Share facility information with contractors





Topographic Data

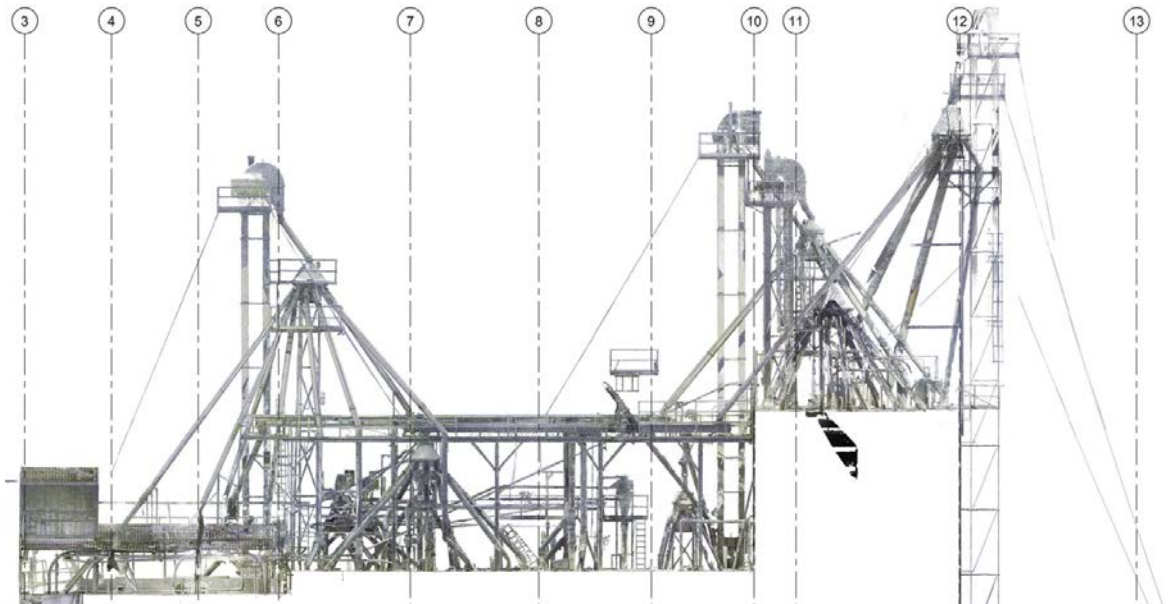
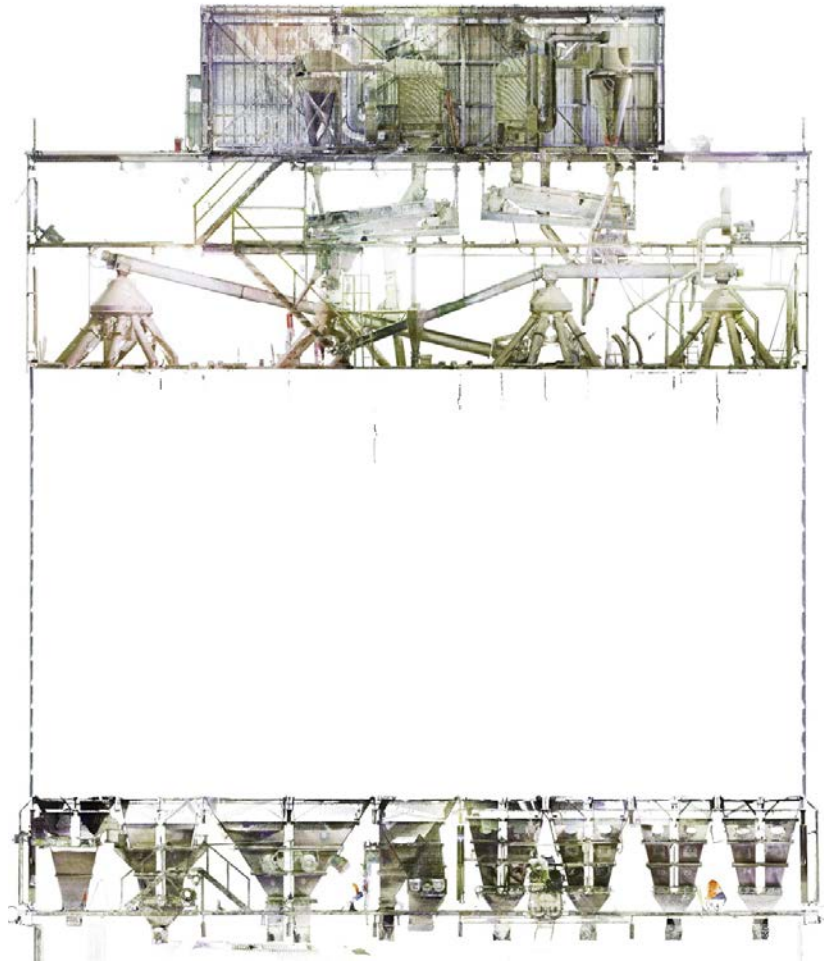
- All points in scans are geo-located (UTM/lat-long/MGRS/etc)
 - centimeter level accuracy
- Coordinate site data in with Surveyors and Civil Engineers

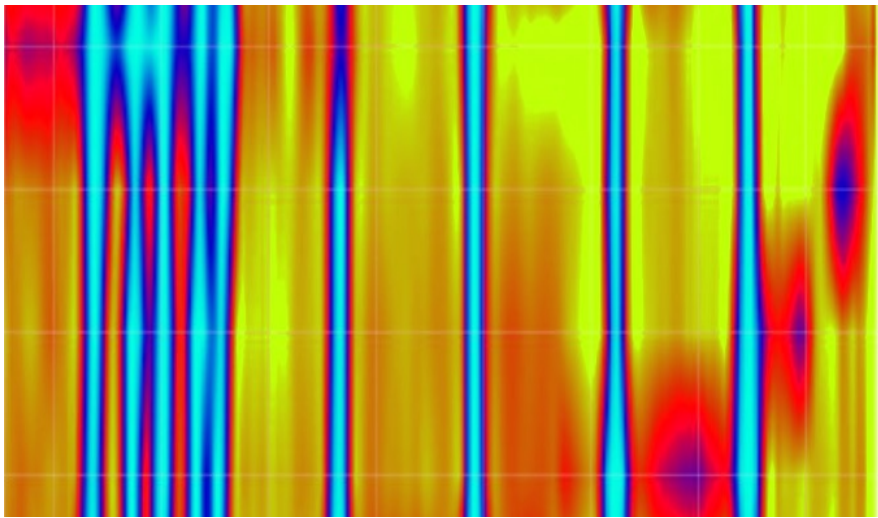
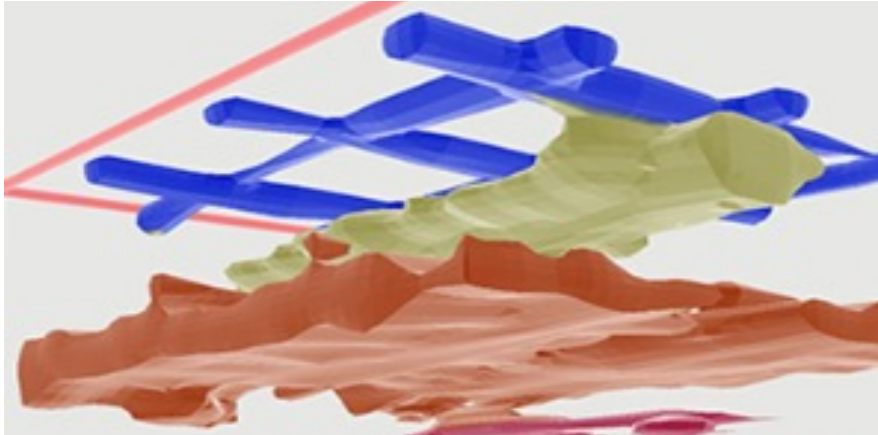


- Perform accurate take-offs of cut/fill
- Layout Rail and Truck Corridors

Scanning Equipment & Technology

- Traditional tripod mounted laser scanners
- Robot & Drone mounted Systems





Scanning Equipment & Technology cont.

- Photogrammetry
 - Age old 3D tech still used today
- GPR (Ground Penetration Radar)
 - For use in rebar & void detection
- Ultrasonic Sensors
 - Used in void and rebar corrosion detection for concrete
- Multispectrum Cameras
 - For use in blight & drought detection as well as crop yield estimates



Daniel Starr

SCANSTAR, LLC

COFOUNDER





Finally. The no-cables way...

to manage grain like a pro.

www.amber.ag/no

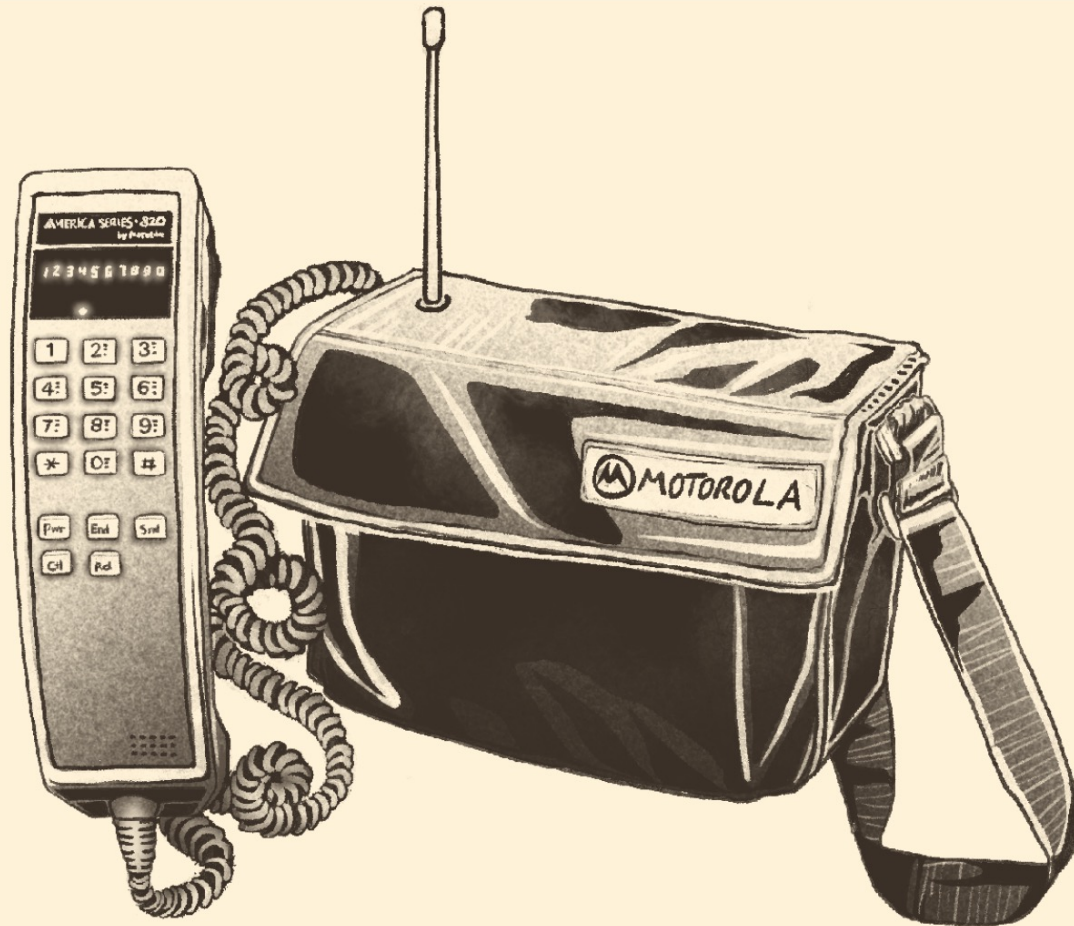


Lucas Frye

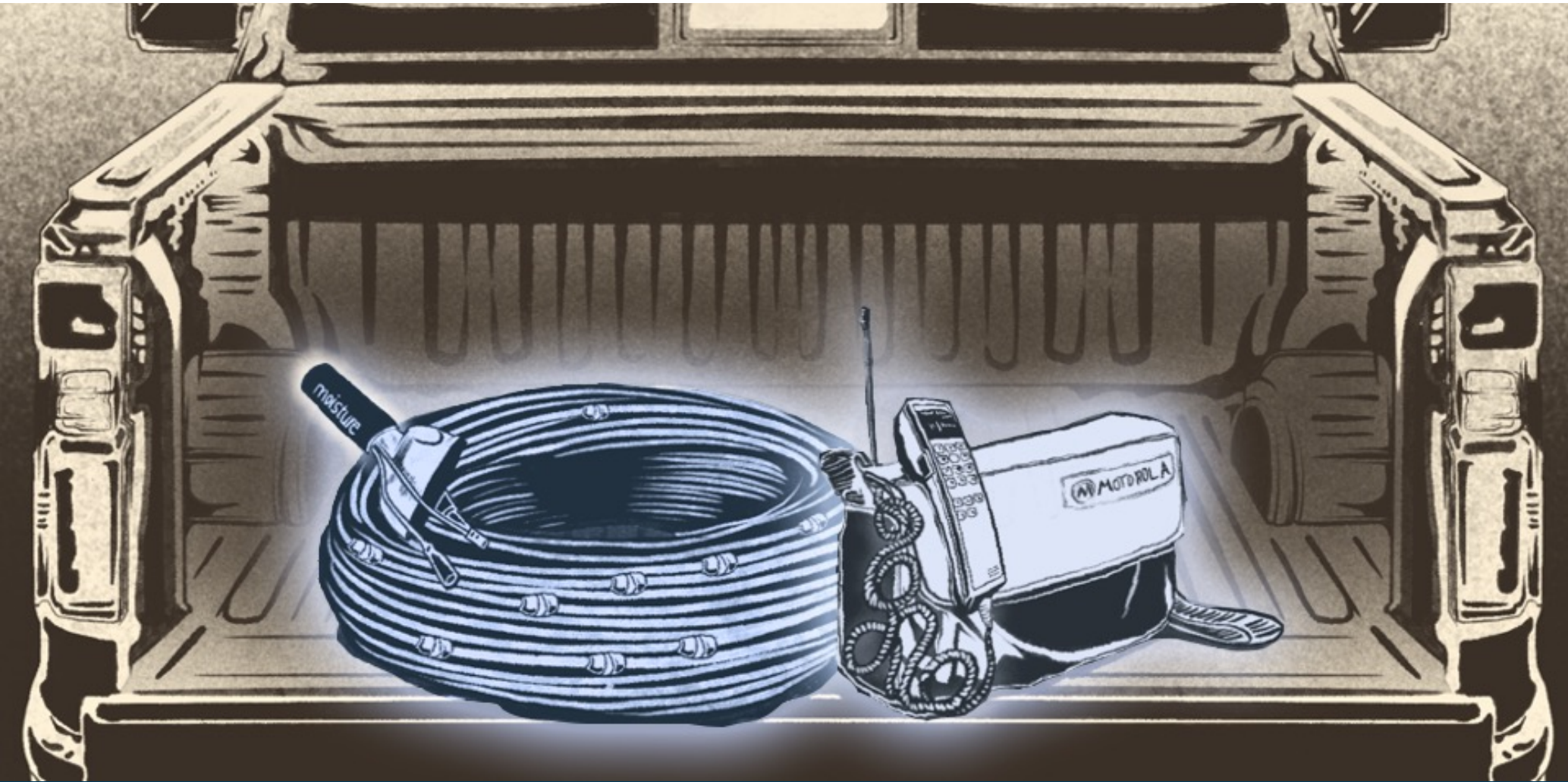
Amber Agriculture | www.amber.ag

Founder

amb Ξ r
AGRICULTURE













ANALYZER



The earliest alert to grain
tipping out of spec

AUTOMATOR



Catch the right air
at the right time

ACE AIR

Finally. The no-cables way
to monitor grain
like a pro



ANALYZER



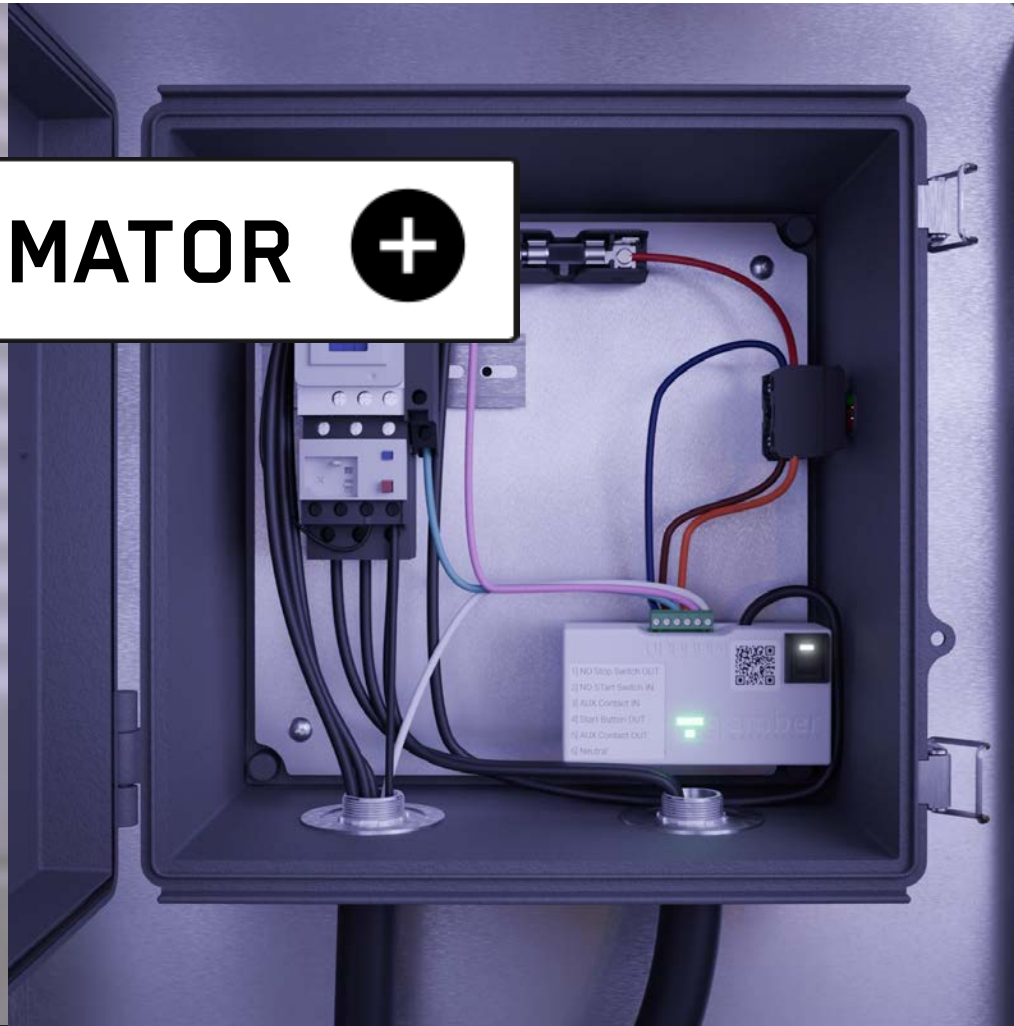


the earliest alert to grain tipping
out of spec



catch the right air at the right
time to capture high prices

AUTOMATOR +

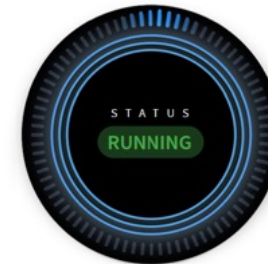


THE FUTURE

IS FINALLY HERE



Fan Controls



Current Automation

Now	RUNTIME 17 Hours
Wed 11:00 AM	AVG WEATHER 53°F • 20% RH

EDIT

STOP

Automation Schedule

Automating Cooling until next Saturday 11:03 AM

Thu 12:00 AM	RUNTIME 9 Hours
Thu 9:00 AM	AVG WEATHER 49°F • 42% RH
Mon 9:00 PM	RUNTIME 11 Hours



24/7 ALERT CO2



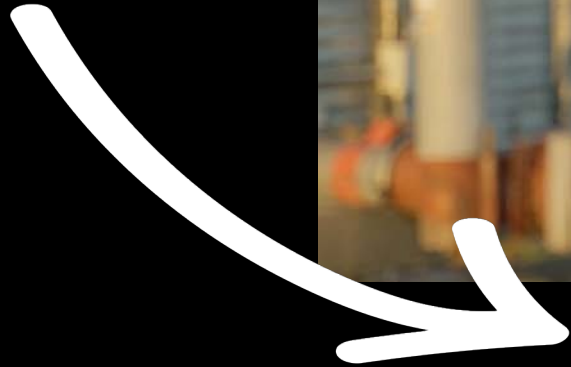
AUTOMATIONS



INVENTORY

NEW
-
2023

GO HERE
-
in next minute...
-
for Early Offer
(and full pamphlet)



ACE AIR Product Pamphlet.pdf
2.7 MB / 2023



www.amber.ag/no

INTEGRATED CAMERA LOADOUT



EASY
AUTOMATION
INC.

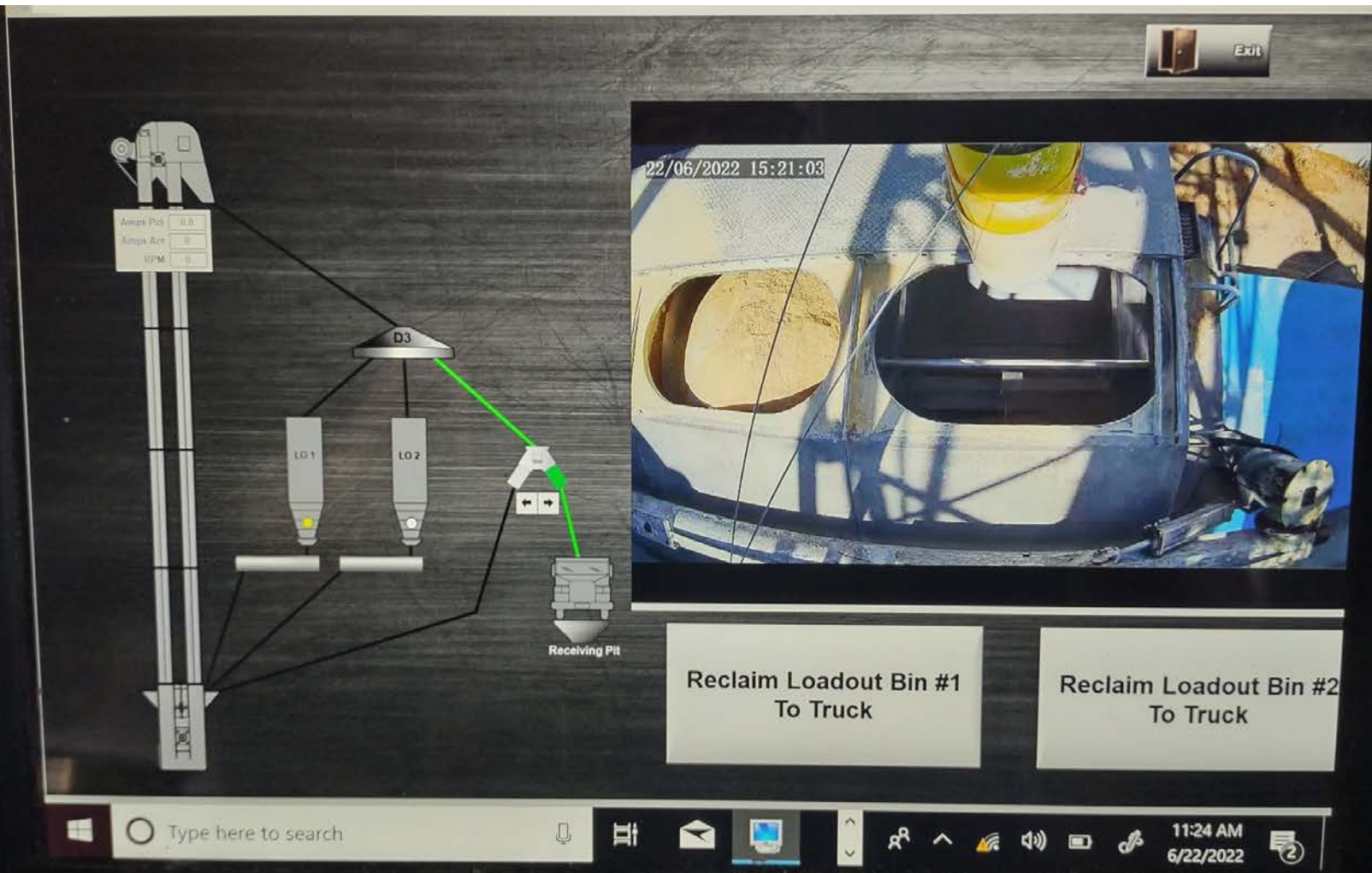


BRADY GAALSWYK

EASY AUTOMATION, INC.

OWNER & CO-PRESIDENT

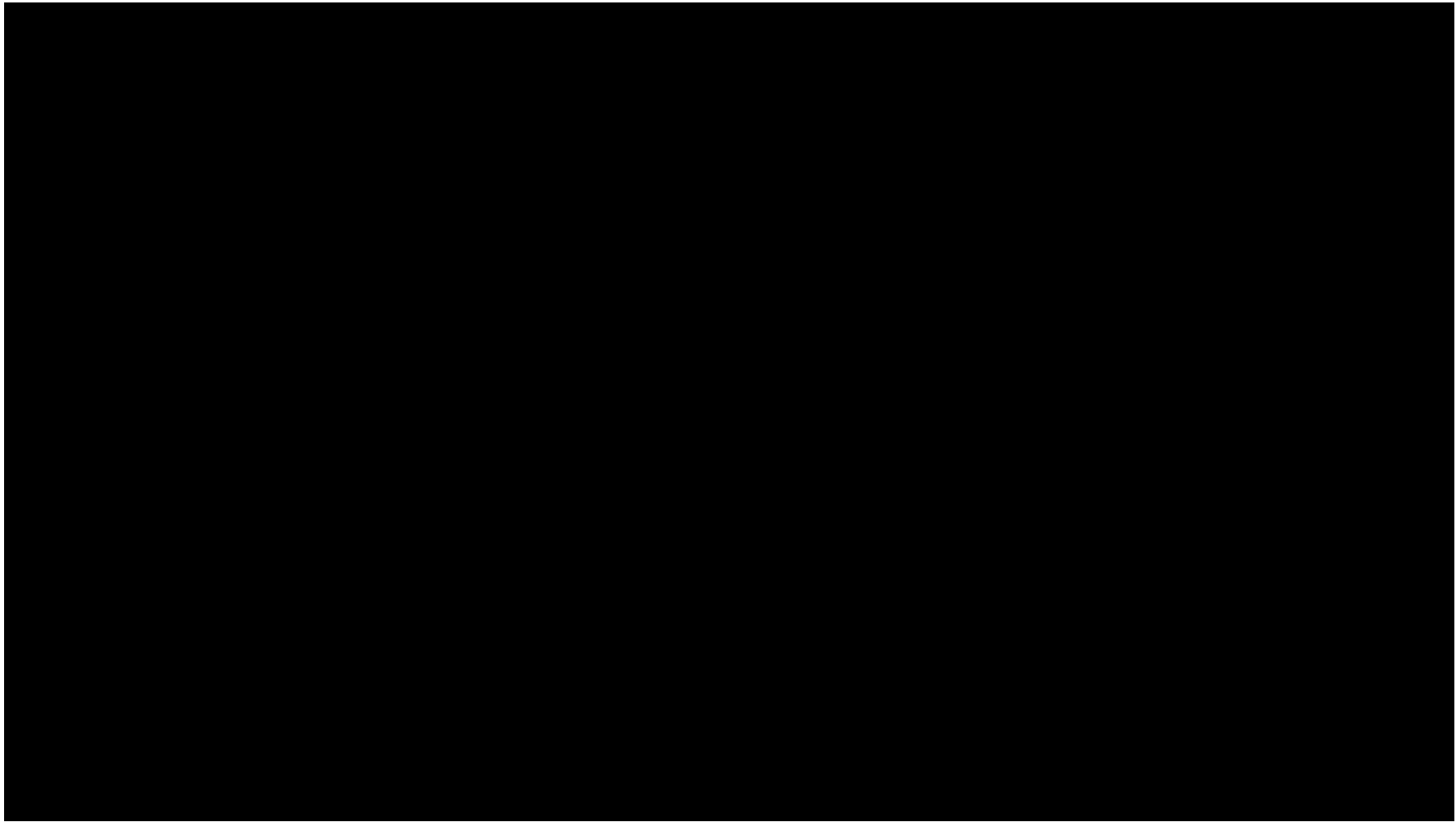




Integrated Camera Loadout

BENEFITS & PURPOSE

- Reduce the # of people needed to run a facility
- Creates enhanced viewability of facility for operator
- Increase truck loadout numbers and decrease loadout wait times

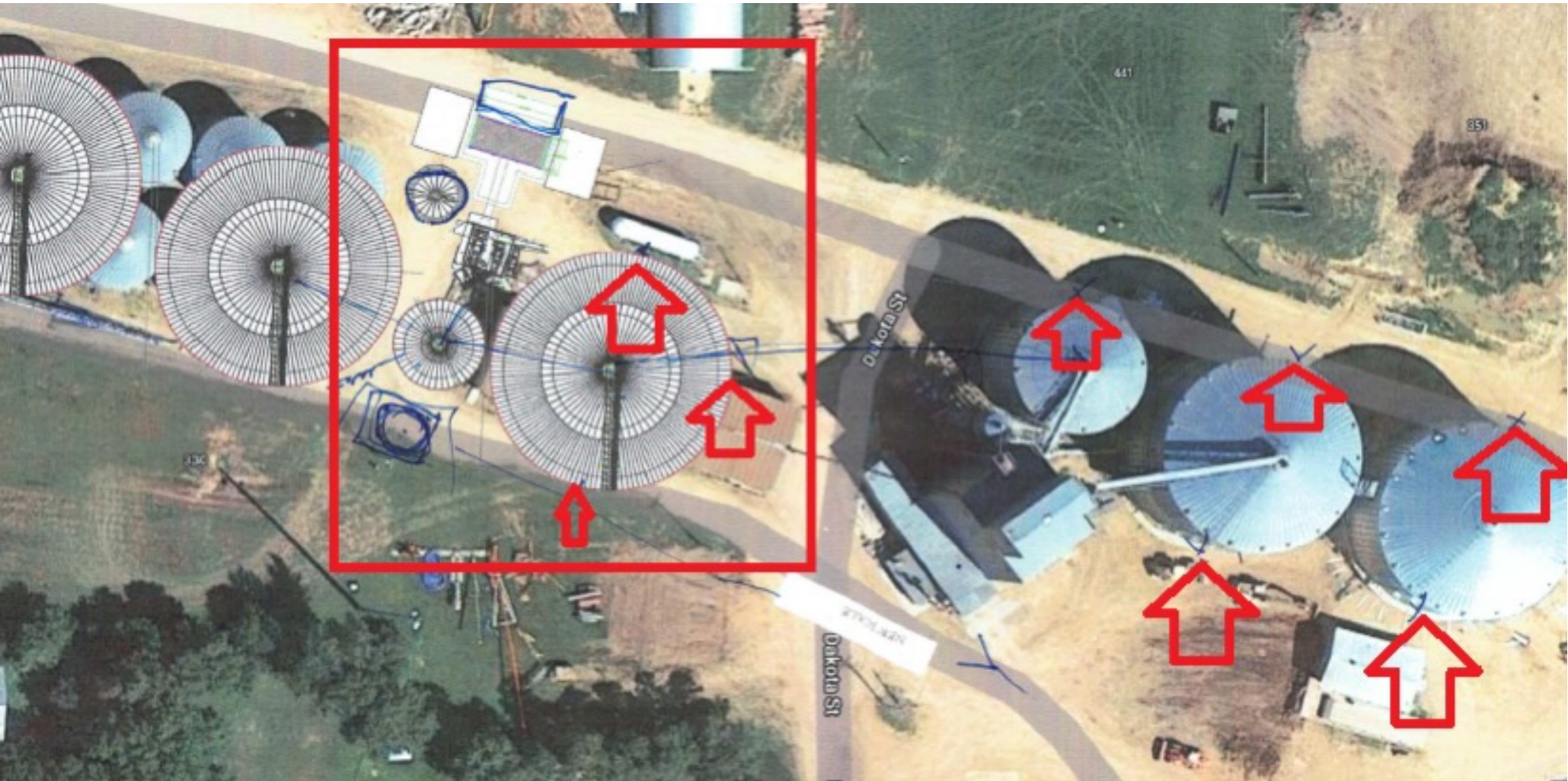


Integrated Camera Loadout

WHAT IT IS

- Installation of cameras at each loadout location that link with facility automation.
- Grain operators can view cameras and control loadout gates remotely via cameras and automation.
- Truck drivers can load themselves out via a tablet without having to leave their seat.

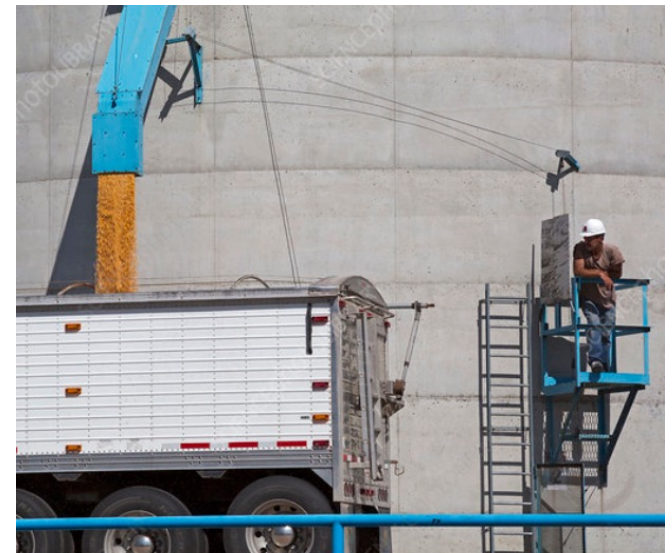




Integrated Camera Loadout

SAFETY & EFFICIENCY BENEFITS

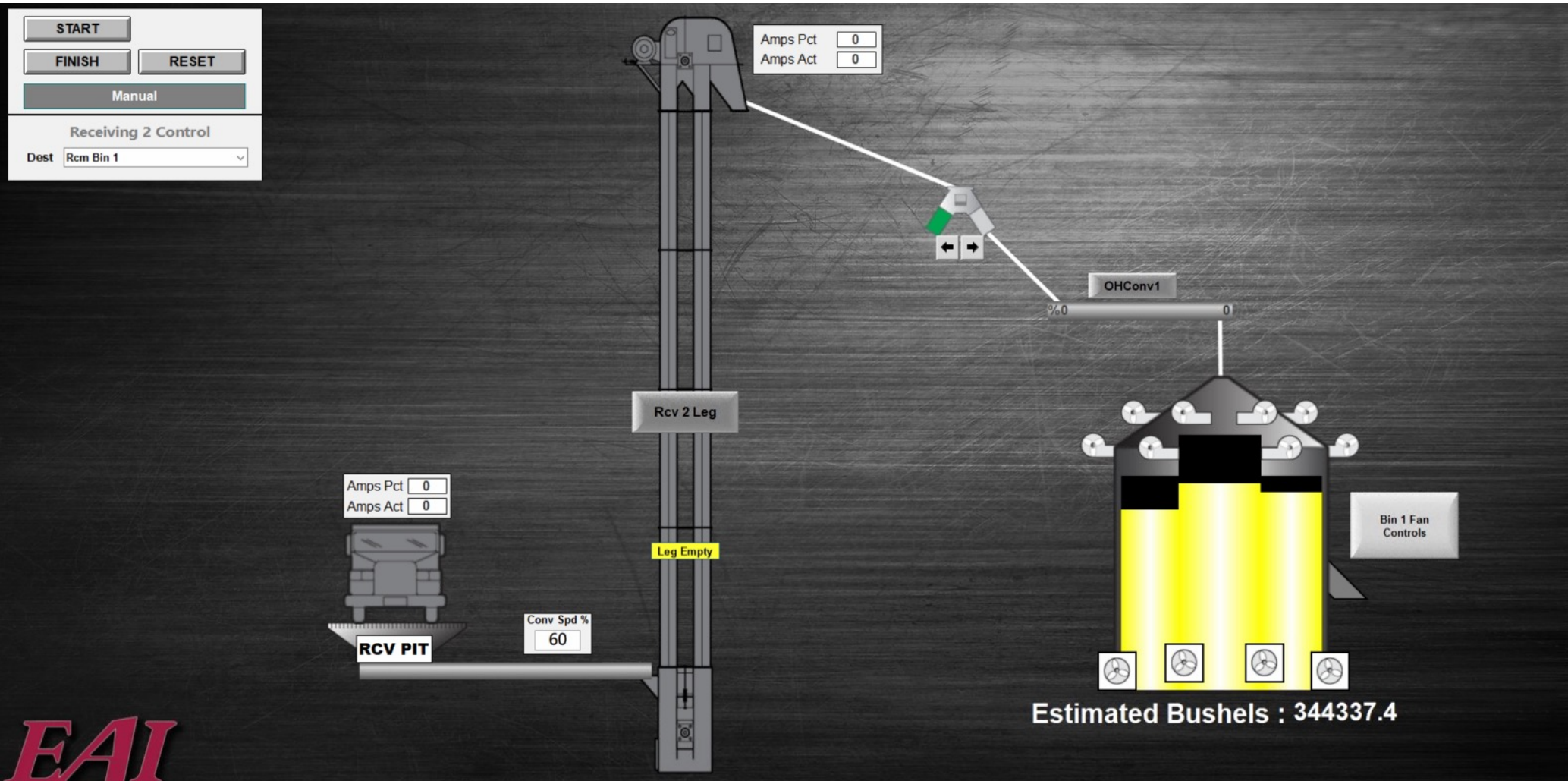
- Reduces the # of people needed to run receiving and loadout at a facility
- Reduces the # of times an operator must climb ladders to open gates and watch loading trucks
- Reduces the # of times a driver must leave their truck, reducing risk for cross contamination
- Increases the # of trucks that can be loaded in a day



Integrated Camera Loadout

INTEGRATION IN AUTOMATION

- Integrated Camera Loadout is just one available feature of Easy Automation's complete Grain Handling Controls and Automation
- Other features include:
 - Control of receiving and reclaim equipment
 - Hazard monitoring sensors and devices
 - Interfacing to dryers
 - Equipment maintenance timers



EAI



NexGen Feed Mill Platform

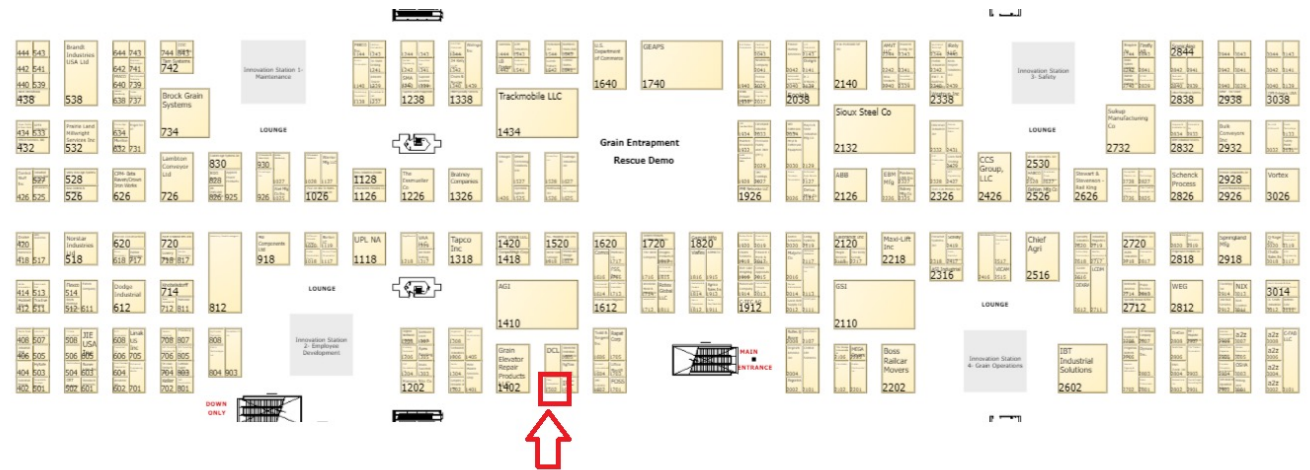


NexGen Agronomy Platform



NexGen Grain Platform

STOP BY BOOTH 1502 AND SAY HI!



Small Changes...Big Impact!

Utility Bills – Big Impact?



Tim Nelson

KC Energy, LLC

President



KC ENERGY



Evergy Kansas Central service area

CURRENT CHARGES

Billing Factors

Rate code (See Definitions)	WCSGS	WCSGS	WCMGS
Meter #/Service ID #	40670588	40536449	40666174
Billing period	06/07/22 - 07/07/22	06/07/22 - 07/07/22	06/07/22 - 07/07/22
Billing days	30	30	30
Present meter read	01692	06092	27759
Previous meter read	01612	06047	26872
Billing multiplier	400	40	160
Energy use kWh	31,804.4000	1,802.1200	141,855.6900
Actual demand kW	90.0800	8.6240	352.8960
Power factor %	69.2994	51.1854	81.9875
Adjusted demand kW	116.9880	8.6240	387.3839
Summer peak kW	-	-	399.2914
50% of summer peak kW	-	-	199.6457
Peak demand month			September 2021
Tariff minimum demand kW	-	-	200
Billing demand kW	116.9880	8.6240	387.3839
Cost of fuel per kWh	0.043956	0.043956	0.043956
Charges			
Basic service fee	\$22.73	\$22.73	\$118.42
Energy use	1,545.84	107.89	2,092.66
Demand	958.62	31.02	6,256.25
Fuel used in power generation	1,397.99	79.21	6,235.41
Property tax surcharge	51.84	2.94	231.22
Transmission	567.07	32.13	2,264.60
Energy efficiency	6.93	0.39	30.92
Total current charges	\$4,551.02	\$276.31	\$17,229.48

RATE CODES & DEFINITIONS

WCMGS - Medium General Service

WCSGS - Small General Service

Definition of terms available at www.Evergy.com/BillDefinitions

Sales Tax Exemptions



SUMMARY

Previous balance	\$9,195.54
Payments - Thank you	<u>-9,195.54</u>
Balance forward	0.00
Current charges	8,179.78
City franchise fee	408.99
Sales tax	<u>772.99</u>
Total due by December 8, 2022	\$9,361.76



Lighting Retrofits



=



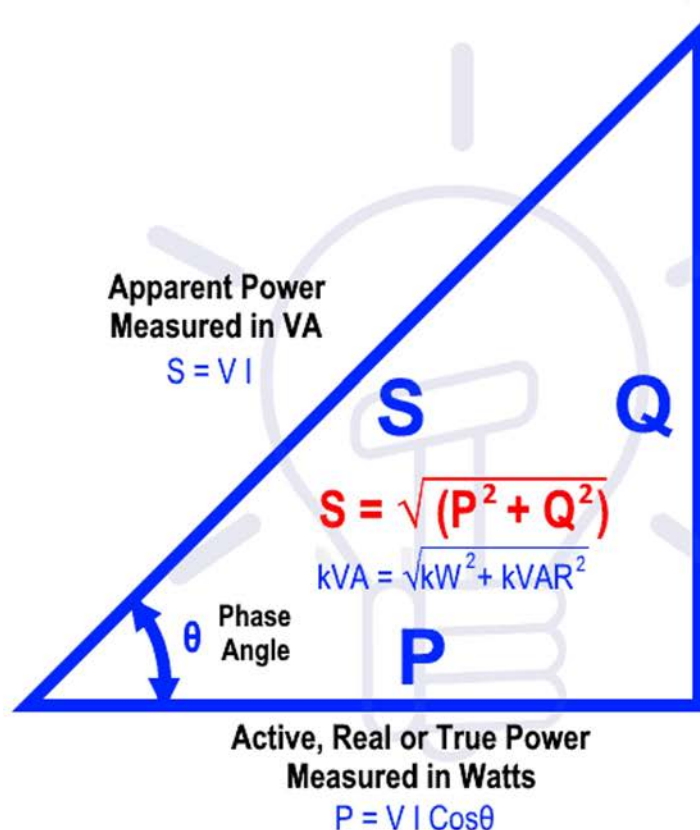
=



Power Factor Correction



Power Triangle & Power Factor



$$P = VI \cos\theta$$

$$\cos\theta = \frac{P}{VI}$$

$$\cos\theta = \frac{kW}{kVA}$$

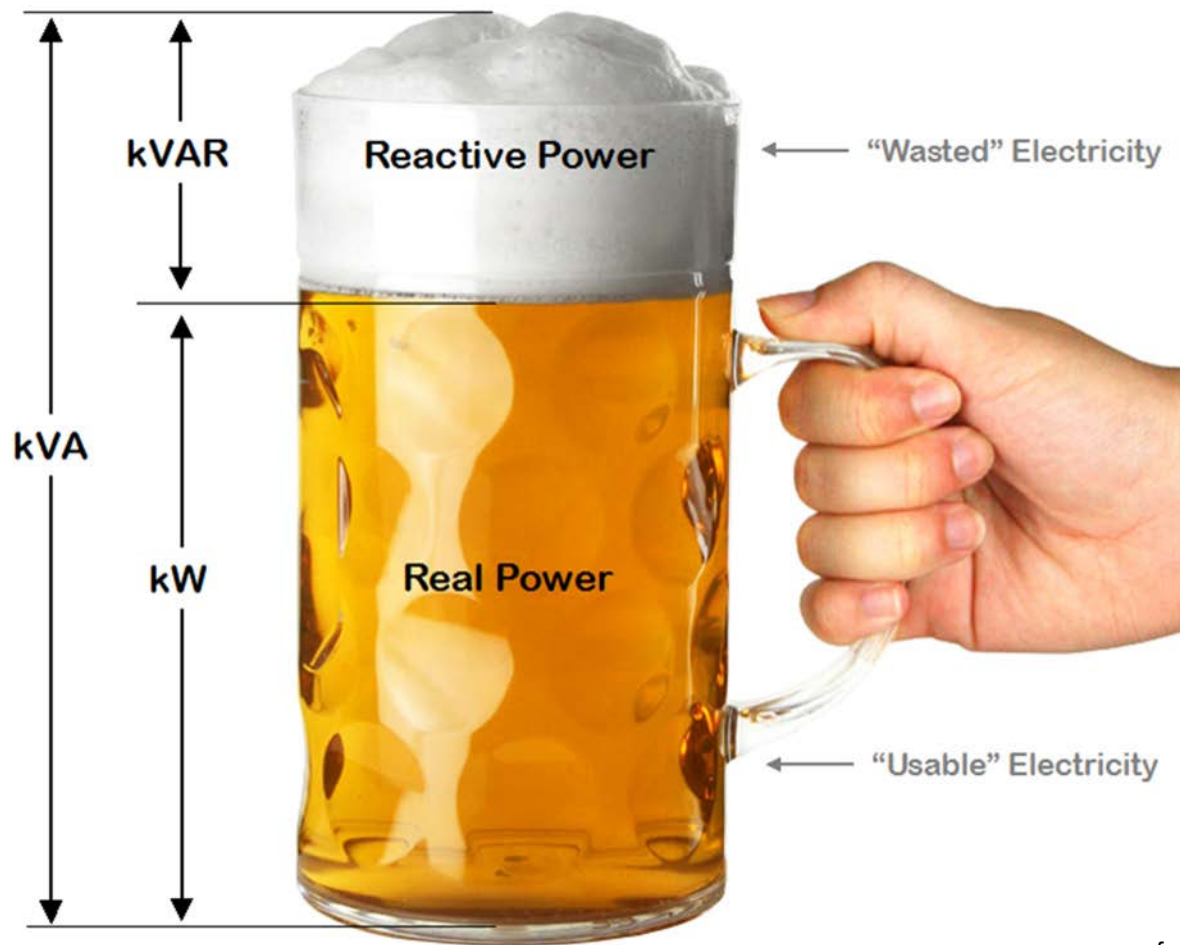
$$\cos\theta = \frac{\text{True Power}}{\text{Apparent Power}}$$

$$\cos\theta = \frac{R}{Z}$$

$$\cos\theta = \frac{kW}{kVA} = \text{Power Factor}$$

$$\text{Power Factor} = \frac{\text{Active Power}}{\text{Reactive Power}}$$

www.electricaltechnology.org



from www.electricalsynergy.edublogs.org

How to Build a Training Center



Scott Biel

MKC

Director of Safety

MKC *Shared growth.
Shared success.*

How to Build a Training Center

GEAPS

EXCHANGE



Identify Location

- Under utilized building
- Build new
- Central location

GE

Identify Needs

- Safety
- Operations
- Meeting Space



Acquire Exhibits

- Worn Examples
- Build Exhibits



If Only

If Only LLC

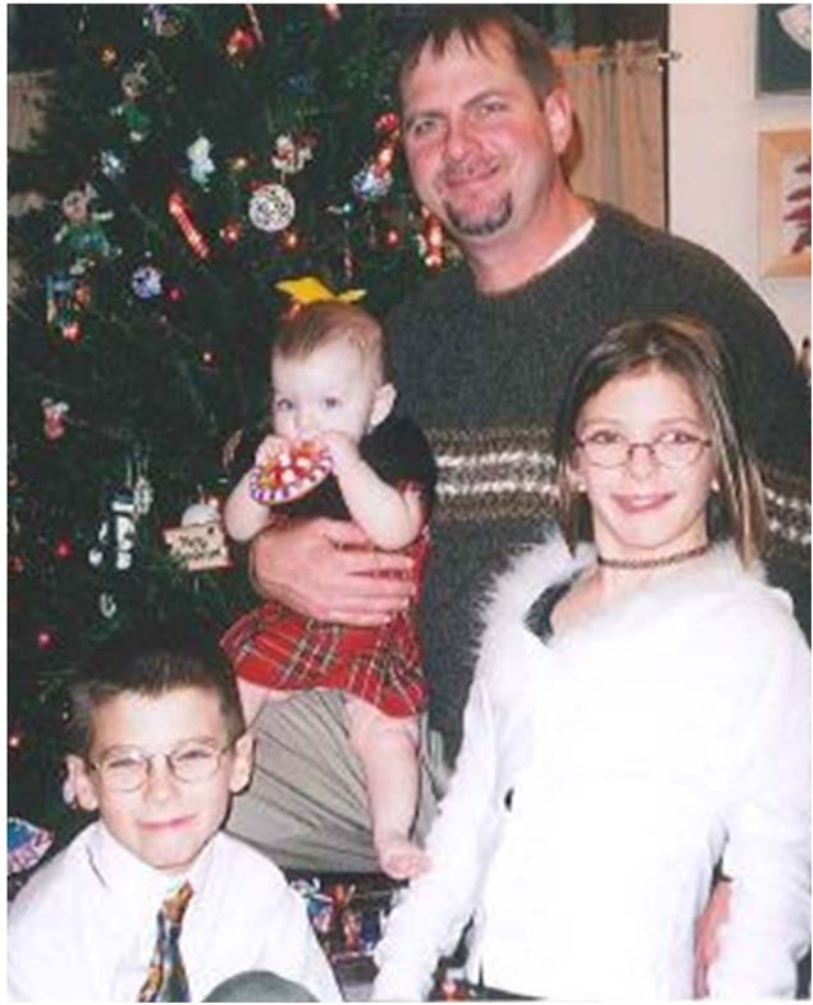


Dawn Chisholm

If Only LLC

Safety and Motivational Speaker





Christmas 2002

- The last picture our three children; Sara, Alex, and Anna got to have with their dad.



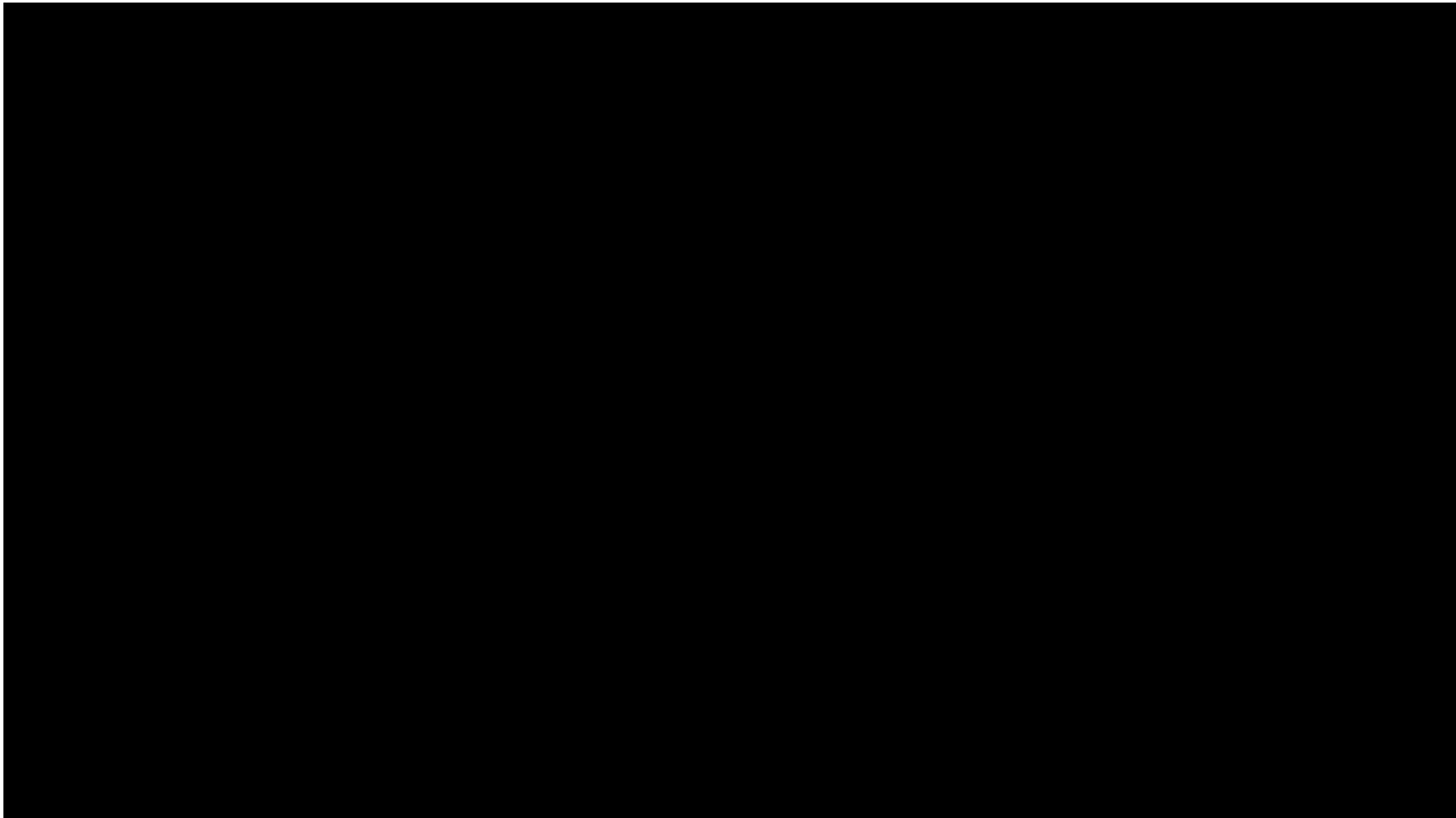
Feb. 7, 2002

• The day forever etched into my mind and the day that our family's lives changed forever; just because of a ***split-second decision*** of Bill's.



Feb. 7, 2002

- Bill was pulled down into a seated position with his foot entangled in the *unguarded and running auger*. Bill suffocated and was crushed all at the same time.





- This is how our children must visit their dad now. Don't let this be how your family must visit you.

Remember to “If Only...”

- To slow down.
- Be present.
- Think before you act.
- Reach out – ask for help for both your physical and mental health.
- Communicate with family, co-workers, and friends.
- Wear the correct P.P.E., keep safety guards and shields on equipment.
- **EVERYONE WANTS YOU TO COME HOME AT THE END OF THE DAY.**

Dawn Chisholm | If Only

701 . 566 . 3920
dawn@ifonlyllc.com

<https://www.ifonlyllc.com/>

Thank You!

Win a GEAPS Prize Bundle!

GEAPS Idea Exchange Post Event
Survey



**SCAN FOR
SURVEY**

Please take a short survey for this session to help us plan for next year.

For every survey you submit you will be entered into a drawing.

GEAPS Prize Bundle

- \$200 Visa Gift card and free registration to Leadership Conference
- Raffle will be drawn at Closing Celebration, Tue 2/28



SAVE THE DATE!

FEBRUARY 24 – 27, 2024

Kansas City Convention Center
Kansas City, Missouri



GEAPS
EXCHANGE